

Power Hour



Bethel AME Church
604 North Walnut Street
Wilmington, DE 19801

August 22, 2021

8:45 AM - Facebook Live, YouTube Live and Zoom

PRAISE AND WORSHIP

TEHILLAH PRAISE TEAM

WELCOME

SIS. KORI CHEATHAM

INVOCATION

MINISTERIAL STAFF

SELECTION

TEHILLAH PRAISE TEAM

PERIOD OF ENCOURAGEMENT

MINISTERIAL STAFF

PASTORAL ANNOUNCEMENTS

SERMONIC SELECTION

TEHILLAH PRAISE TEAM

MEDITATION

BISHOP SILVESTER S. BEAMAN

INVITATION TO CHRISTIAN DISCIPLESHIP

BISHOP BEAMAN

CLOSING PRAYER

BISHOP BEAMAN

MEDITATIVE SONG

TEHILLAH PRAISE TEAM

Bethel Virtual Worship



Facebook: <https://www.facebook.com/BethelAMEwilm> at 9:00 a.m.



YouTube Live: www.bethelwilmington.org at 9:00 a.m. and replay anytime



Zoom: Dial in 1-929-205-6099; Meeting ID number 832-1771-9930#; Password 039208# at 9:00 a.m.



CHURCH ANNOUNCEMENTS

**** Please notify the church office first, at 302-658-1676, if you are sick, hospital bound, or have had death in your family. ****

Please submit all announcements for the Sunday Bulletin to Sis. Vanetta Harper at vharper@bethelwilmg.org, **no later than Monday at 5:00 p.m.**

GriefShare meets every week on Monday at 6:30 p.m. via zoom. The link to enter the meeting is <https://us02web.zoom.us/j/85467000394>. Meeting ID: 854 6700 0394; Passcode: 667831.



The flowers on the altar were donated by Bro. Carlton Lampkins in loving memory of his maternal grandmother, Viola Eunice Ravnall Young.



For members who have not picked up their church directory, please do so by September 12th or they will be made available to the congregation.

BETHEL EDUCATION STIPEND 2021 - 2022 SCHOOL YEAR

Fall 2021 stipend applications are available. The college student must be a member of Bethel AME Church or a transferee from another AME Church where he or she has been a member for at least two years and is now a member of Bethel. The completed application, with proof of enrollment from your institution attached, must be **postmarked no later than October 15** or received via email at bamescholar@gmail.com by 11:59p.m. on that same date. Lateness and/or incompleteness will disqualify your application. **DO NOT PUT IN SCHOLARSHIP MAIL BOX.**

BETHEL FAMILY SCHOLARSHIP FOR CLASS OF 2022

For a Bethel member to receive a family scholarship in 2022, he or she must have attended or must attend two workshops - the High School Workshop and the Middle School Workshop. They will be presented via Zoom on Friday, September 10th, and October 8th, respectively, at 7:00 p.m. The student and the parent or guardian should attend each workshop. If you have already attended one or both sessions, you do not need to attend again. However, while attending for a second time is not required, it may be a benefit to you. Students in grades 9-12 are invited to attend the high school workshop, and students in grades 5 - 8 are invited to attend the middle school workshop. The log-in information is:

<https://us02web.zoom.us/j/89842292547?pwd=SnhhWGtETkpHMGxTZWZqU0VVMHh4Zz09>

Meeting ID: 898 4229 2547; Passcode: 361014

2021 Summer Affinity Sundays

AUGUST 22 Represent Your Millennials
29 Represent Your Generation

SEPTEMBER 05 Communion/All White Sunday



SICK AND SHUT-IN

Dolores Bethea
Jackie Brown
Mary Brown
Edith Dickerson

Ron Hannah
Rubie Johnson
Vicki Johnson

Mildred Jolley
Jeanette McCallister
Dr. Lynn Roberts
Cynthia Warner

BELOVED IN LONG TERM CARE

Generva Jones
Phyllis Newman
Lottoria Warner

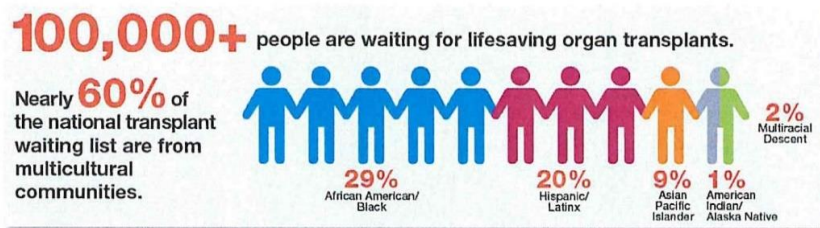
Kutz Home
Cadia Healthcare
Gilpin Hall

COMMUNITY ANNOUNCEMENTS

Educating Our Communities to Achieve Equity for Minority Patients in Organ Donation and Transplant

August is National Minority Donor Awareness Month

Join us for this interactive seminar to learn about the need to promote organ donation and transplant in multicultural communities to address racial inequities. This session will provide education about organ donation and transplant, the importance of Living Kidney Donation, and encourage conversations to help save lives.



Date/Time:

Wednesday, August 25th
Noon to 1:00 pm



Guest Speaker: Dr. Velma Scantlebury

- Recently featured in Newsweek and national expert on the topic of “Achieving Equity for Minority Patients in Transplant”
- First female African American transplant surgeon in United States
- Retired ChristianaCare Associate Chief of Transplantation
- Presenting in partnership with MOTTEP (Minority Organ Tissue Transplant Education Program) <http://www.natlmottep.org/>

For questions about organ donation and transplant please contact:

Kidney Transplant Program
302.623.3866

christianacare.org/kidneytransplant

Join us by ZOOM:

<https://christianacaretelehealth.zoom.us/j/3973417888?pwd=SWZ0ODJPcWk4d3hJbUNWcmgvOWYyZz09>

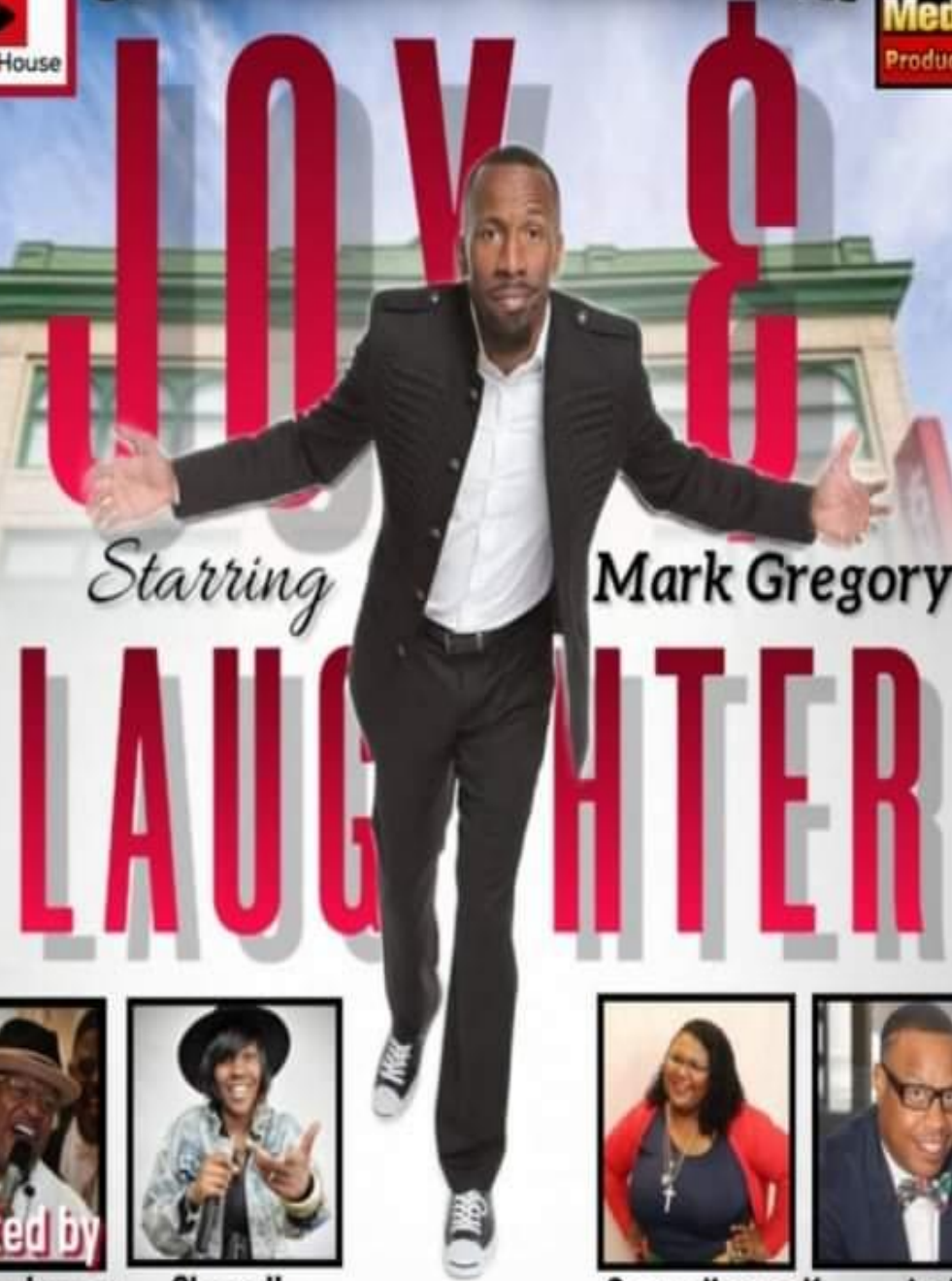
Meeting ID: 397 341 7888 Password: 140982



ChristianaCare™



CLEAN COMEDY CELEBRATION



Starring

Mark Gregory

LAUGHTER



Hosted by

**Don Jream
Hines**



**Shanell
Renee**



**Comedienne K
Mack**



**Josh
Dennison**

SUNDAY AUGUST 22nd

THE QUEEN THEATER

500 NORTH MARKET ST WILMINGTON DE 19805

\$30 ADMISSION | DOORS OPEN 5PM | SHOWTIME 6PM

THOMAS 484-406-5795 | DAVE 302-521-2536

graphics by Coby Jackk

CHURCH NURTURE ACTIVITIES

August 22 – August 28

Sunday	10:30 a.m. – 12:00 p.m.	Church School	https://us02web.zoom.us/j/83630016215?pwd=eXljd3VUZ2ZxSGF6WjVQZWZaYUxQZz09 Dial: 929 205 6099 Meeting ID: 836 3001 6215 Password: 953466
Monday - Thursday	6:00 a.m.	Morning Glory Prayer Call	Dial in: 425-436-6323; access code #193660
Monday	6:30 p.m.	GriefShare Support Group	https://us02web.zoom.us/j/85467000394 Dial: 929-205-6099 Meeting ID: 854 6700 0394 Passcode: 667831
Tuesday	7:00 p.m.	August Quarterly Service Rev. Dawn Christopher Preacher	Sanctuary
Wednesday	10:45 a.m.	Mid-Morning Bible Study	https://us02web.zoom.us/j/81307543982?pwd=ZUZoOFhkUi9YVlg1d0xMaVI4MXluQT09 Dial: 929 205 6099 Meeting ID: 813 0754 3982 Password: 965374
Wednesday	12:00 p.m.	Hour of Power	www.bethelwilmington.org "YouTube Watch Us Live"
Wednesday	5:30 p.m.	Body and Soul Exercise Class	https://www.facebook.com/BethelAMEwilm
Wednesday	6:00 p.m.	Intercessory Prayer	Dial in: 425-436-6399; access code: 369109
Wednesday	7:00 p.m.	Faith Building Clinic/Bible Study	www.bethelwilmington.org "YouTube Watch Us Live" https://us02web.zoom.us/j/83495631213?pwd=Y1ZsSEFRUIZPZUFpczBCM211eEcvUT09 Dial in 929 205 6099 Meeting ID: 834 9563 1213 Password: 643906
Thursday	6:30 p.m.	WMS Executive Board Meeting	Conference Call
Thursday	6:30 p.m.	Tehillah Praise Team Rehearsal	Sanctuary

Saturday	8:30 a.m.	Mission in Motion	Fellowship Hall
Saturday	9:00 a.m.	Sons of Allen Men's Bible Study	https://zoom.us/j/859154143?pwd=R21DR0IMZEdweFBpemNRbzFnSIFIQT09 Dial: 929-205-6099 Meeting ID: 859 154 143 Password: 099789
Saturday	2:00 p.m.	Youth Church School	https://us02web.zoom.us/j/87170295956?pwd=R0ZzZ1U3YkdIUHZZTkpya0F2eHZSUT09 Dial: 929-205-6099 Meeting ID: 871 7029 5956 Passcode: 162337

